

VACANT LAND

FOR SALE/ GROUND LEASE



Features

- 44,823+/- SF Lot (1 Acre +)
- Near Major Signalized Intersection
- Commercial Zoning (C-2)
- Potential Major Development Site
- Average Traffic Count 36,800 CPD (2015)
- Near Major Amenities/Freeways
- Near California State University of Fullerton

For further information, please contact:



Paul Kott Realtors, Inc.

PAUL KOTT

1225 W. Lincoln Avenue

Anaheim, CA 92805

714.772.7000

714.772.3372 Fax

paulkott@pkrealtors.com

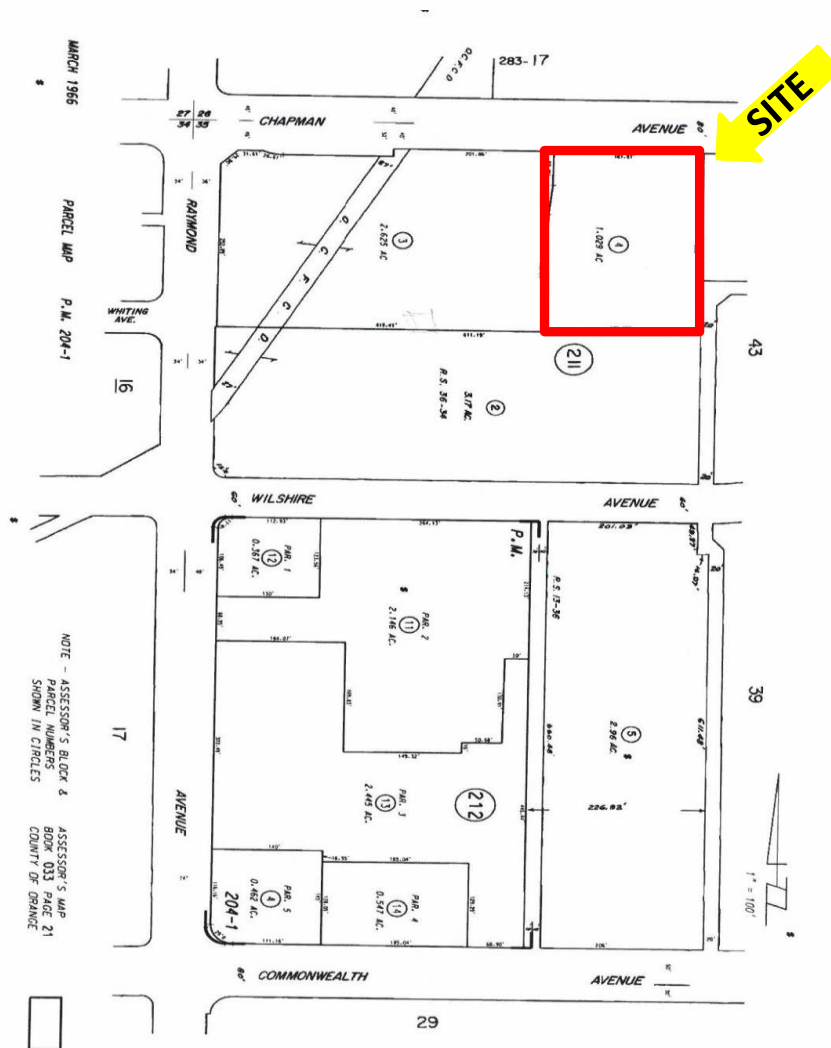
www.paulkottrealtors.com

CalBRE #00637576/ #01842644

E. Chapman Avenue (E/Raymond)
Fullerton • California
APN 033-211-04



E. CHAPMAN AVENUE (E/RAYMOND) • FULLERTON, CALIFORNIA



For further information, please contact:



Paul Kott Realtors, Inc.

PAUL KOTT

1225 W. Lincoln Avenue

Anaheim, CA 92805

714.772.7000

714.772.3372 Fax

paulkott@pkrealtors.com

www.paulkottrealtors.com

CalBRE #00637576/ #01842644

No warranty or representation, express or implied, is made as to the accuracy of the information contained herein, and same is submitted subject to errors, omissions, change of price, rental or other conditions, withdrawal without notice, and to any special listing conditions, imposed by our principals.